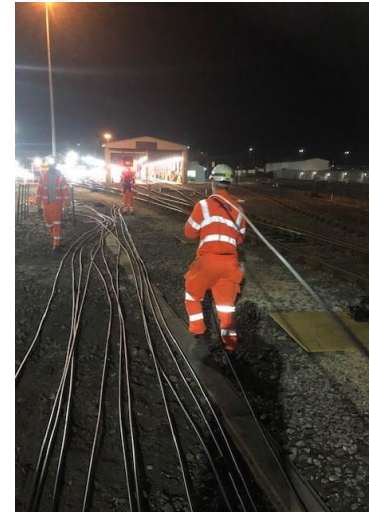


PROJECT PROFILE: BRISTOL TEMPLE MEADS

PROJECT SPECIFICATIONS

Status:	COMPLETED
Started:	APRIL 21
Completed:	JULY 21
Project Duration:	3 MONTHS
Client:	TELENT
Location:	BRISTOL
Discipline:	INSTALLATION OF FIBRE OPTIC CABLES, CABLE PULL, INSTALLATION OF STAKKA BOXES



ABOUT THE PROJECT

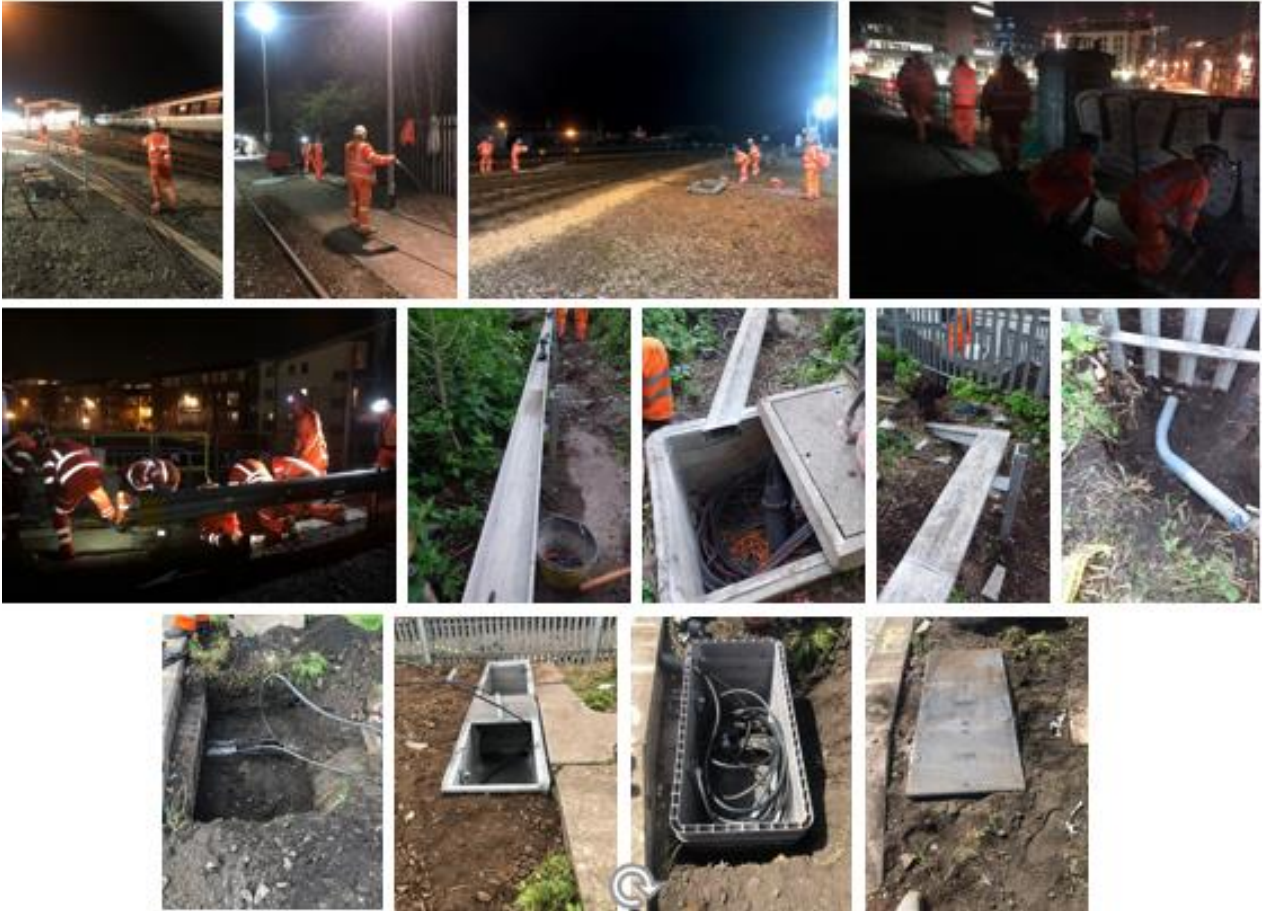
Sunville Rail were asked to complete this work that was part of a separate remodelling project. A list of the requested works was created, and we made sure to complete accordingly.

PROJECT OVERVIEW

As part of the Bristol East Junction remodelling project, Sunville Rail carried out the installation of New Lumen fibre optic cables between Bristol Temple Meads and Doctor Days Junction, including 3 new stakka boxes and elevated troughing route linking up with the Lumen road network in Oxford street. The cables were pulled through 6 UTX's and a buried duct route through the station car park to the Exchange. The team came up against a number of hurdles having to work around other contractors and machines within the possession and train movements within the Ariva Train Care Depot. The Sunville Installation overcome all obstacles for the successful delivery of these works.



PROJECT PROFILE: BRISTOL TEMPLE MEADS



For more information please contact:

Paul Hayes
Managing Director
Sunville Rail Limited
paul.hayes@sunvillerrail.co.uk

